



SX81 Series | Single-pole switch 20A quick connection 6.3 black body



sample image

PRODUCT CODE: SX81111811210000

Wiring diagrams



Terminal type



Accessories

Body colour



Actuator colour



Marking



Marking colour



Rating

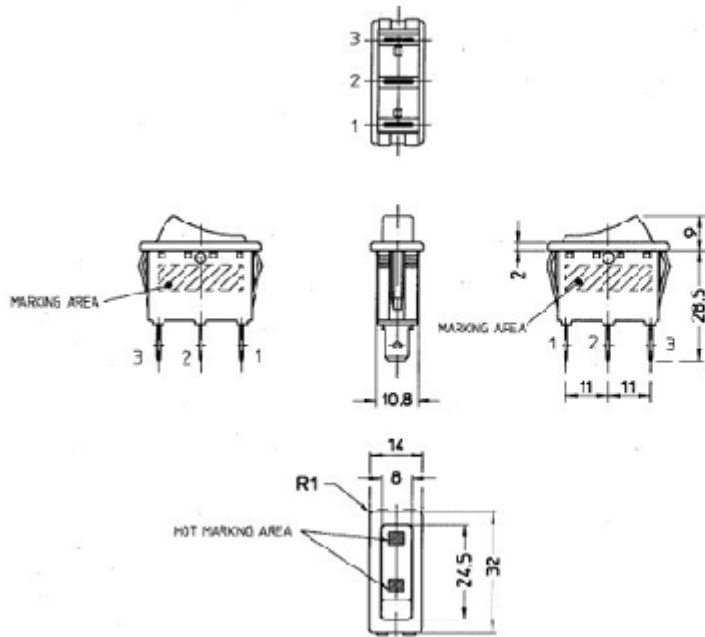
20 (2) A / 250 VAC
 16 (8) A / 250 VAC
 10 (4) A / 400 VAC
 10 (6) A / 250 VAC - 5E4
 T125/55 °C

20 A / 125 VAC
 16 A / 250 VAC
 3/4 HP - 125 VAC
 3/4 HP - 250 VAC
 T105 °C

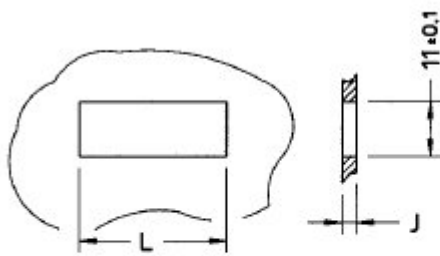
Approvals



Dimensions (mm)



Cut out (mm)



L	J	
$30 \begin{smallmatrix} -0.2 \\ 0 \end{smallmatrix}$	0.7-3.5	PLASTIC
$30.2 \begin{smallmatrix} -0.2 \\ 0 \end{smallmatrix}$	0.7-2.5	METAL

Stampa scheda