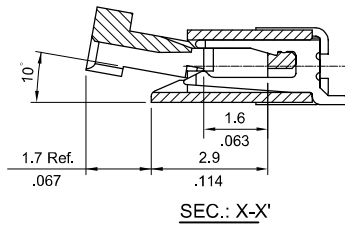
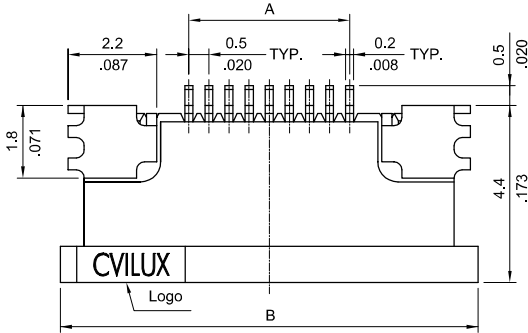
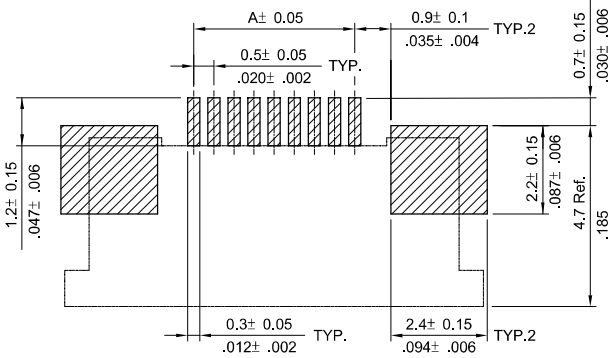
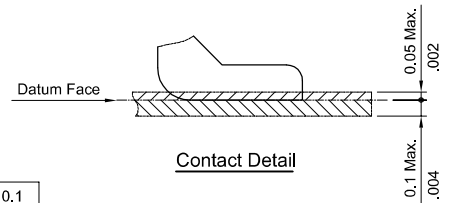
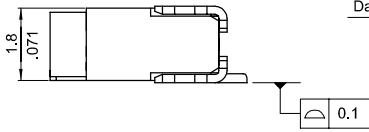
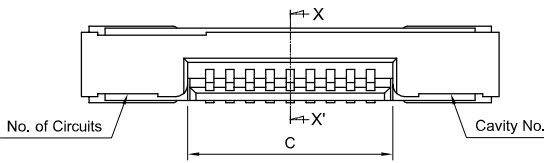


CF21 Series 0.50mm(.020") SMT ZIF FFC/FPC Downside Connectors

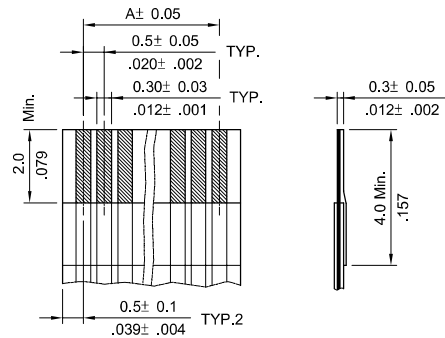
- ⦿ Tin-lead plated Phosphor Bronze Downside contact
- ⦿ Insulation: High temperature plastic UL 94V-0, Color Nature
- ⦿ Slider: High temperature plastic UL 94V-0, Color Brown
- ⦿ Actuator designed easy for FFC/FPC installation
- ⦿ Fully check by CCD and Hi-Pot test
- ⦿ With fixed metal tabs to secure connector in place
- ⦿ Available in Tube or Reel packing



A = 0.50 x No. of Spaces
 B = A + 6.4
 C = A + 1.1
 * Available in 6 through 50 circuits



Sold Pad Pattern



Accommodated FFC/FPC

Ordering Code

1 **2** **3** **4** **5** **6**
CF 2 1 5 0 1 D 0 R 0

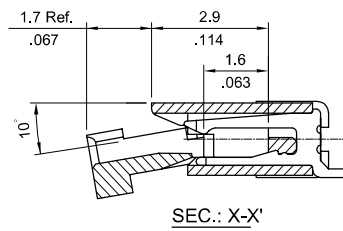
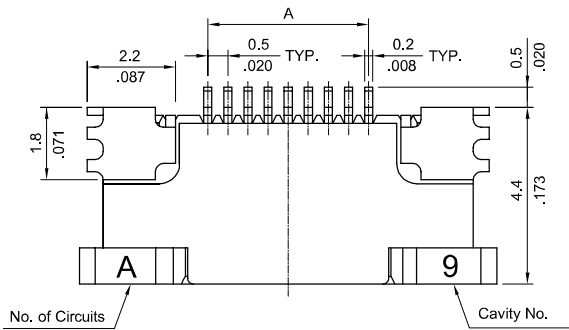
- 1** Series No.
- 2** Circuits : 06 to 50
- 3** Plating code:
1= Tin-lead over Nickel

- 4** Contact style:
D= Downside contact
- 5** Color: 0 = Nature

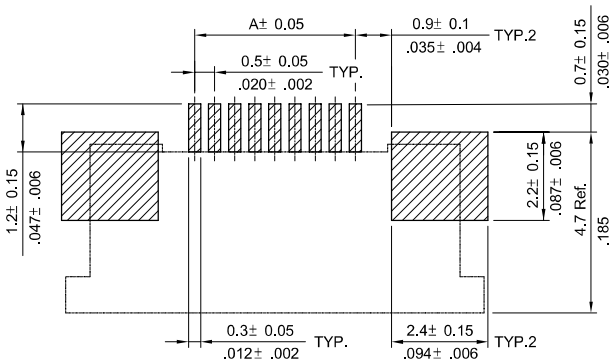
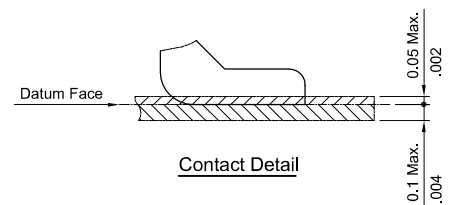
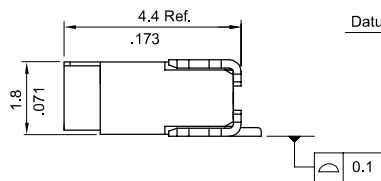
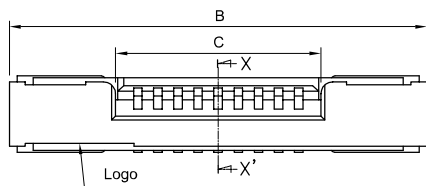
- 6** Other options:
R0 = Tape & Reel
T0 = Tube Packing
* Special option Consult manufacturer

CF21 Series 0.50mm(.020") SMT ZIF FFC/FPC Upside Connectors

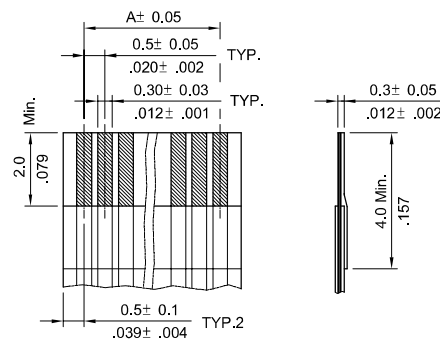
- ⊙ Tin-lead plated Phosphor Bronze Upside contact
- ⊙ Insulation: High temperature plastic UL 94V-0, Color Nature
- ⊙ Slider: High temperature plastic UL 94V-0, Color Brown
- ⊙ Actuator designed easy for FFC/FPC installation
- ⊙ Fully check by CCD and Hi-Pot test
- ⊙ With fixed metal tabs to secure connector in place
- ⊙ Available in Tube or Reel packing



A = 0.50 x No. of Spaces
 B = A + 6.4
 C = A + 1.1
 * Available in 6 through 50 circuits



Sold Pad Pattern



Accommodated FFC/FPC

Ordering Code

① **CF** ② **21** ③ **50** ④ **1U** ⑤ **0** ⑥ **R0**

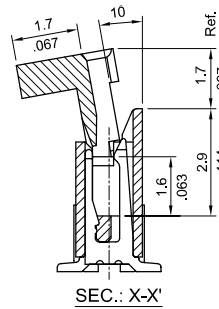
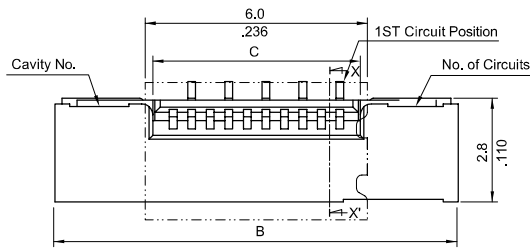
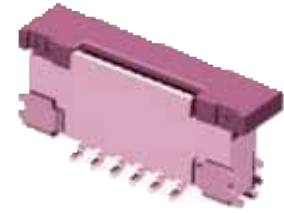
- ① Series No.
- ② Circuits : 06 to 20
- ③ Plating code:
1 = Tin-lead over Nickel

- ④ Contact style:
U = Upside contact
- ⑤ Color: 0 = Nature

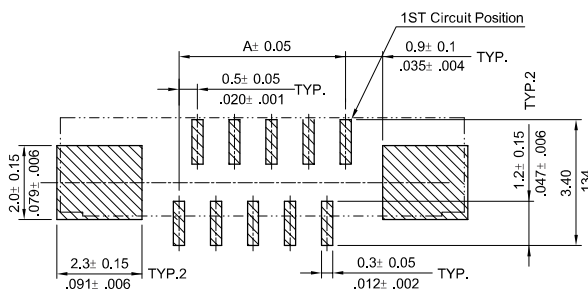
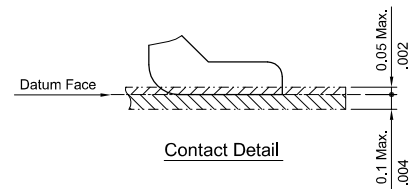
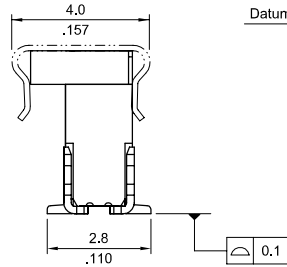
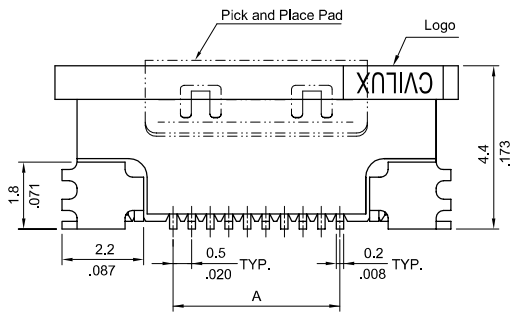
- ⑥ Other options:
R0 = Tape & Reel
T0 = Tube Packing
* Special option Consult manufacturer

CF21 Series 0.50mm(.020") SMT ZIF FFC/FPC Vertical Type Connectors

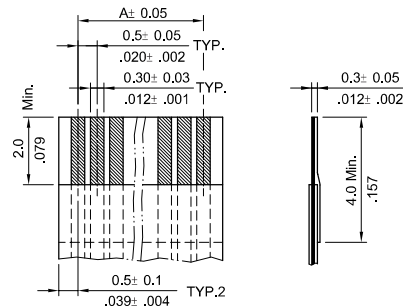
- ⊙ Tin-lead plated Phosphor Bronze Vertical Type
- ⊙ Insulation: High temperature plastic UL 94V-0, Color Nature
- ⊙ Slider: High temperature plastic UL 94V-0, Color Brown
- ⊙ Actuator designed easy for FFC/FPC installation
- ⊙ Fully check by CCD and Hi-Pot test
- ⊙ With fixed metal tabs to secure connector in place
- ⊙ Available in Tube or Reel packing



A = 0.50 x No. of Spaces
 B = A + 6.4
 C = A + 1.1
 * Available in 6 through 50 circuits



Sold Pad Pattern



Accommodated FFC/FPC

Ordering Code

① ② ③ ④ ⑤ ⑥ ⑦
CF 2 1 5 0 1 V 0 R 0

- ① Series No.
- ② Circuits : 06 to 50
- ③ Plating code:
1 = Tin-lead over Nickel

- ④ Contact style:
V = Vertical Type
- ⑤ Color: 0 = Nature
- ⑥ Packing Type:
R = Tape & Reel
T = Tube Packing

- ⑦ Other options:
0 = Without Pick and Place Pad(Standard)
P = With Pick and Place Pad
* Special option Consult manufacturer